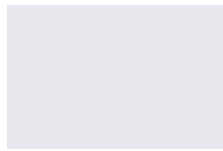
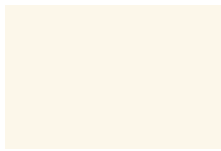


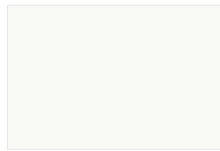
## High Performance Metal Roofing Finishes



Stone White  
SR.66/TE.87



Bone White  
SR.67/TE.87



Regal White  
SR.70/TE.87



Sandstone  
SR.54/TE.87



Bright Silver  
SR.54/TE.87



Colonial Red  
SR.26/TE.87



Aged Copper  
SR.41/TE.87



Burgundy  
SR.28/TE.87



Pacific Blue  
SR.26/TE.87



Pre-weathered Galvalume<sup>®</sup>  
SR.27/TE.87



Slate Blue  
SR.35/TE.87



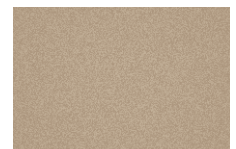
Teal Blue  
SR.28/TE.87



Patina Green  
SR.32/TE.87



Everglade Moss  
SR.29/TE.87



Champagne  
SR.41/TE.87



Forest Green  
SR.28/TE.87



Island Blue  
SR.35/TE.87



Hartford Green  
SR.25/TE.87



Charcoal Gray  
SR.25/TE.87



Metallic Copper  
SR.37/TE.87



Dove Gray  
SR.38/TE.87



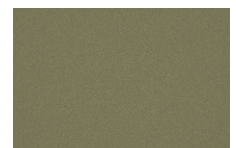
Dark Bronze  
SR.26/TE.87



Surrey Beige  
SR.47/TE.87



Sierra Tan  
SR.37/TE.87



Antique Patina  
SR.27/TE.87



Medium Bronze  
SR.32/TE.87



Mansard Brown  
SR.27/TE.87



Matte Black  
SR.26/TE.87



Terra Cotta  
SR.40/TE.87



Brilliance Red  
SR.38/TE.87



Deep Blue Sea  
SR.26/TE.87



Hemlock  
SR.34/TE.87



Slate Gray  
SR.41/TE.87



Buckskin  
SR.25/TE.87








Drexlume<sup>™</sup>  
SR.68/TE.10

PREMIUM

MILL FINISH

					
▲★CARDINAL RED	▲★COLONIAL RED	BURGUNDY	▲★TERRA COTTA	▲★SIERRA TAN	▲★MANSARD BROWN
					
▲★STONE WHITE	▲★GRANITE	▲★SANDSTONE	▲★ALMOND	▲★MEDIUM BRONZE	▲★DARK BRONZE
					
▲★SLATE GRAY	▲★BONE WHITE	▲★MUSKET GRAY	▲★CHARCOAL	MIDNIGHT BRONZE	MATTE BLACK
					
▲★CITYSCAPE	INTERSTATE BLUE	▲★HEMLOCK GREEN	▲★ARCADIA GREEN	▲★PATINA GREEN	▲★HUNTER GREEN
					
▲★MILITARY BLUE	AWARD BLUE	▲★TEAL	HARTFORD GREEN	FOREST GREEN	▲★EVERGREEN
		<p><b>Kynar 500® or Hylar 5000® pre-finished steel and aluminum for roofing, curtainwall and storefront applications.</b></p>  <ul style="list-style-type: none"> <li>● Denotes PAC-CLAD Metallic Colors</li> <li>▲ Denotes PAC-CLAD Cool Colors</li> <li>★ Denotes ENERGY STAR colors</li> </ul>			
★BERKSHIRE BLUE	▲★SLATE BLUE	<p>See back for color availability chart. Note: Midnight Bronze available in .040 aluminum only.</p>			

## PAC-CLAD® Metallic Colors

					
●▲★ZINC	●▲★SILVER	●▲★COPPER PENNY	●▲★AGED COPPER	●▲★CHAMPAGNE	●▲★WEATHERED ZINC

# PAC-CLAD® Color Availability

PAC-CLAD STANDARD COLORS	REFLECTIVITY	EMISSION	3 YEAR EXPOSURE	SRI	STEEL			ALUMINUM			ENERGY STAR*
					24 GA.	22 GA.	.032	.040	.050	.063	
ALMOND	0.53	0.87	0.52	62	✓	✓	✓	✓	✓		★
ARCADIA GREEN	0.31	0.88	0.32	32	✓		✓				★
BONE WHITE	0.67	0.86	0.64	81	✓	✓	✓	✓	✓	✓	★
CARDINAL RED	0.37	0.86	0.36	39	✓		✓		✓		★
CHARCOAL	0.27	0.87	0.27	27	✓		✓		✓		★
CITYSCAPE	0.44	0.86	0.43	49	✓	✓	✓	✓	✓		★
COLONIAL RED	0.32	0.88	0.32	34	✓		✓	✓	✓		★
DARK BRONZE	0.26	0.85	0.24	24	✓	✓	✓	✓	✓	✓	★
EVERGREEN	0.27	0.86	0.25	26	✓		✓				★
GRANITE*	0.32	0.87	0.33	33	✓	✓	✓	✓	✓		★
HEMLOCK GREEN	0.29	0.86	0.30	29	✓		✓		✓		★
HUNTER GREEN	0.27	0.86	0.26	26	✓		✓				★
MANSARD BROWN	0.29	0.86	0.27	29	✓	✓	✓	✓	✓		★
MEDIUM BRONZE	0.26	0.88	0.25	26	✓	✓	✓	✓	✓	✓	★
MILITARY BLUE	0.29	0.87	0.28	29	✓		✓				★
MUSKET GRAY	0.31	0.87	0.30	32	✓	✓	✓		✓		★
PATINA GREEN	0.33	0.86	0.32	34	✓		✓				★
SANDSTONE	0.49	0.87	0.49	56	✓	✓	✓	✓	✓	✓	★
SIERRA TAN	0.36	0.87	0.36	39	✓	✓	✓	✓	✓		★
SLATE BLUE	0.25	0.87	0.24	24	✓		✓				★
SLATE GRAY	0.37	0.88	0.36	40	✓	✓	✓	✓	✓		★
STONE WHITE	0.64	0.87	0.61	77	✓	✓	✓	✓	✓	✓	★
TEAL	0.26	0.87	0.26	25	✓		✓				★
TERRA COTTA	0.36	0.88	0.35	39	✓		✓		✓		★
<b>PAC-CLAD METALLIC COLORS</b>											
AGED COPPER	0.26	0.87	0.25	25	✓		✓		✓		★
CHAMPAGNE	0.40	0.82	0.36	42	✓		✓	✓	✓		★
COPPER PENNY	0.47	0.87	0.44	53	✓		✓	✓	✓		★
SILVER	0.49	0.81	0.46	54	✓	✓	✓	✓	✓		★
WEATHERED ZINC	0.26	0.82	0.23	23	✓		✓		✓		★
ZINC	0.33	0.88	0.32	35	✓		✓	✓	✓		★
<b>PAC-CLAD STANDARD COLORS (DO NOT MEET COOL ROOF REQUIREMENTS)</b>											
AWARD BLUE					✓		✓		✓		
BERKSHIRE BLUE*	0.26	0.87	0.25	25	✓						★
BURGUNDY					✓		✓		✓		
FOREST GREEN					✓	✓	✓	✓	✓		
HARTFORD GREEN					✓		✓	✓	✓		
INTERSTATE BLUE					✓		✓		✓		
MATTE BLACK					✓		✓	✓	✓	✓	
MIDNIGHT BRONZE								✓			
<b>CLEAR-COAT ACRYLIC FINISH (NON-KYNAR)</b>											
GALVALUME PLUS	0.68	0.14	0.55	57	✓						

PAC-CLAD® Metallic finishes are available from stock at a moderate extra cost. PAC-CLAD® Copper Penny is a Non-Weathering finish. Solar Reflectance Index calculated according to ASTM E-1980.  
\*Low Gloss/Low Sheen, full Kynar 500® or Hylar 5000® finish

## Energy Star® Performance Criteria:

Emissivity uses ASTM C1371. Reflectivity uses ASTM C1549.

## Technical Data for Kynar 500®/Hylar 5000® Coating:

- South Florida Exposure: Color (ASTM D 2244) - No more than 5ΔE Hunter units at 20 years; Chalk (ASTM D 4214) - Rating no less than 8 at 20 years; Film integrity - 20 years.
- Accelerated Weathering (ASTM D 4587, ASTM G 154): 5000 Hours, QUV-A, 340 NM Bulb - Chalk, per ASTM D 4214, rating of 6 or better; Color, per ASTM D 2244, < 5ΔE (Hunter Units) color change.
- Humidity Resistance (ASTM D 2247): Galvalume or HDG, 100% RH, 2000 hours - No field blisters; Aluminum, 100% RH, 3000 hours - No field blisters

- Salt Spray Resistance (ASTM B 117): Aluminum, 3000 hours, Galvalume or HDG, 1000 hours - Creep from scribe no more than 1/16", no field blisters
- Chemical/Acid Pollution Resistance (ASTM D 1308): Pass
- T-Bend (ASTM D 4145): 1T - 3T with no loss of adhesion
- Pencil hardness (ASTM D 3363): HB - 2B
- Specular Gloss (ASTM D 523) @ 60 degrees: Typical - 20 - 35
- Abrasion Resistance (ASTM D 968): 65 +/- 10 liters
- Cross Hatch Adhesion (ASTM D 3359): No loss of adhesion
- Reverse Impact (ASTM D 2794): Galvalume or HDG, 2x metal thickness inch-pounds, no loss of adhesion; Aluminum, 1.5x metal thickness inch-pounds, no loss of adhesion
- Flame Test (ASTM E 84): Class A Coating

- Water Immersion (ASTM D 870): 500 hours, 100 degrees, no loss of adhesion

## Samples:

These color reproductions are as accurate as modern printing technology will permit. Free material samples are available on request.

## Recycled Content:

For information on recycled content, contact your PAC representative or visit [www.pacgreeninfo.com](http://www.pacgreeninfo.com)